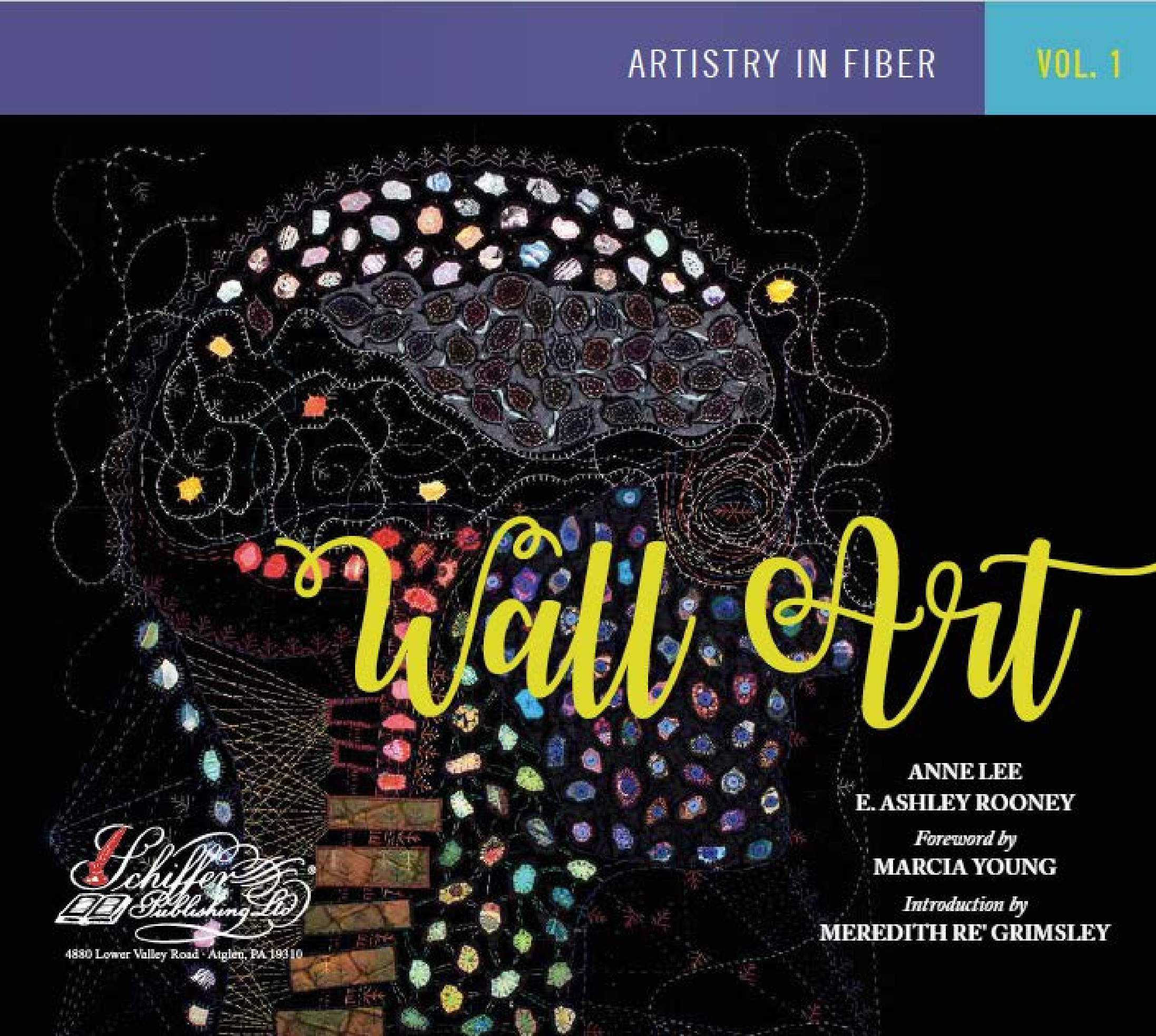


ARTISTRY IN FIBER

VOL. 1



Wall Art

ANNE LEE

E. ASHLEY ROONEY

Foreword by

MARCIA YOUNG

Introduction by

MEREDITH RE' GRIMSLEY

Schiffer
Publishing Co.

4880 Lower Valley Road • Atglen, PA 19310



Junco Sato Pollack
Atlanta, Georgia

Having studied silk weaving and dyeing in Kyoto, Japan in the 1970s, I began hand-processing natural materials to achieve unique works of art. In the '80s while living in upstate New York, I raised silkworms to obtain sericin-rich reeled silk yarn with which to color and weave fabric and shaped it into three-dimensional sculpture while it was on the loom. Now, after forty years, I find myself returning to the pure craft practice of working with my hands and through nature. I harvest wild kudzu vines in the fields of the North Georgia mountains in order to naturally process fibers fine enough to weave, make paper, then create two- and three-dimensional art.

After receiving a MFA in textile design, I focused on working with iridescent and metallic silk and polyester organza, heat-compressing through an industrial heat-roller press and applying colors through digital imaging and printing processes known as dye-sublimation. The transparent and atmospheric dispersed colors imprinted by heat in the molecular structures of the fibers appear iridescent and luminous over the multi-layered, translucent, three-dimensional folds of fabrics.

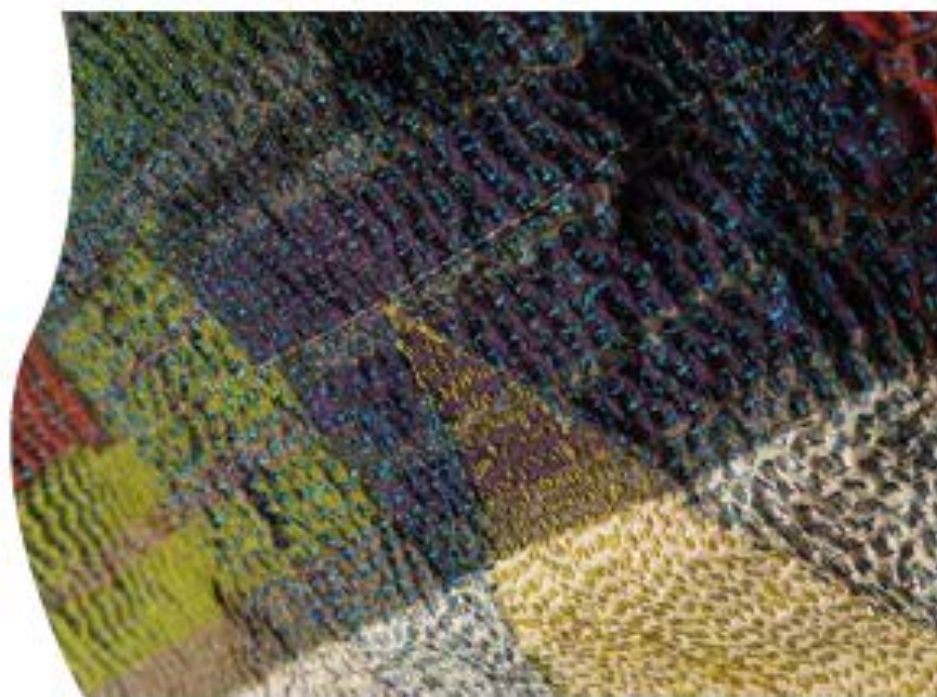
My most recent series since 2006 involves hand-stitching as a metaphor for walking meditation, known as *kinhin* in Zen Buddhism. Over the layered and pieced together fragments, metallic threads that accumulated stitch by stitch as traces of internalized meditation walks over time create an expansive field of meditative awareness into a series of mandalas.



Kinbinō Nirvana. Metallic threads stitched on layered polyester organza. 36" × 45". | Detail



Sky-Clouds-Wind. Disperse dye printed on voided metallic polyester organza. 180" × 65" suspended.



Kinbin5 Samadhi. Metallic threads stitched on layered polyester organza. 36" × 45". | Detail

All images are courtesy of Departure 2015.